

Code:158004

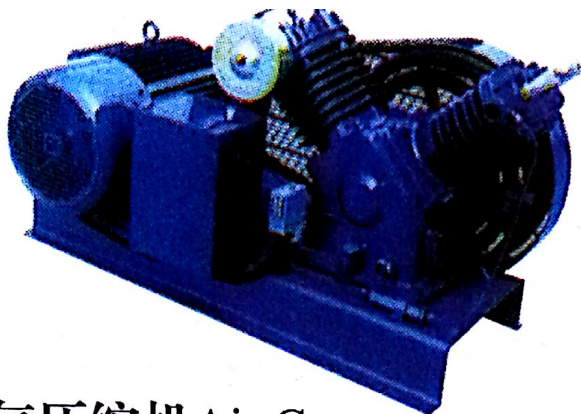
☼ 供应商: 3447

☼ Supplier: 3447

双级空冷式空气压缩机

2-Stage Air-Cooled Starting-Air Compressors(Final Pressure of 30 bar)

型号Type	Wp15L	Wp22L	Wp33L	Wp45L	Wp65L
最大压力Final Max. Pressure (bar)	40	40	40	40	40
分级Stages	2	2	2	2	2
气缸Cylinder	2	2	2	2	2
转速Speed (rpm)	1170/1470/1770	1170/1470/1770	1170/1470/1770	1170/1470/1770	1170/1470/1770
排气量Charging Capacity (m ³ /h)	12.0/15.0/18.0	17.0/21.0/25.0	25.0/32.0/38.0	41.5/53.0/62.0	54.0/68.0/82.0
功率Power Consumption (kw)	2.7/3.4/4.1	3.5/4.4/5.4	5.1/6.5/7.8	7.6/9.6/11.5	10.2/12.8/15.4
热损耗Heat Dissipation (kJ/sec)	5/5/6	5/7/8	6/9/10	10/13/15	15/17/20
外形尺寸 Dimensions (mm)	长Length	856	856	890	1214
	宽Width	600	600	600	742
	高Height	635	635	630	820
重量Weight (kg)	135	135	145	318	328



Code: 158009

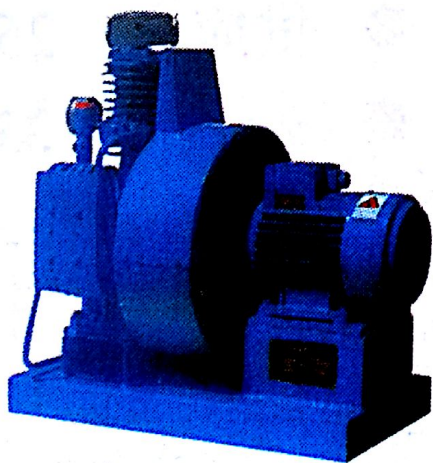
☼ 供应商: 2386

☼ Supplier: 2386

空气压缩机 Air Compressor

型号 Type	CVF-10/I	CVF-15/I	CVF-20/I.0
型式 Model	2 Cylinder, air-cooling		2 Cylinder, air-cooling, 1 step compression
转速 Speed(r/min)	1100	1200	910
缸径 × 行程 Bore × Stroke(mm)	2- φ 65 × 46	2- φ 65 × 46	2- φ 80 × 60
排气量 Capacity(m ³ /h)	10	15	20
额定压力 Rated Pressure(MPa)	1.0		
轴功率 Shaft Power(kW)	1.98	2.78	3.58
外形尺寸 Dimension (L × B × H)(mm)	680 × 380 × 450		900 × 400 × 540

⚓ Notes: Certificate CCS.



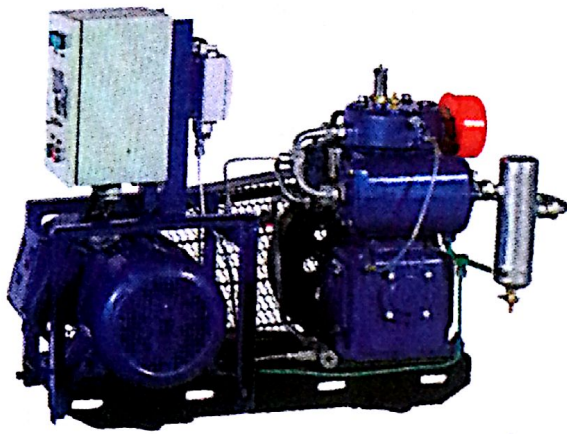
Code: 158010

☼ 供应商: 3298

☼ Supplier: 3298

小型应急启动压缩机 Emergency and Small Starting Compressor
(Vertical or V-type 2-stage Air-cooled)

型号 Type	转速 Speed(r/min)	压力 Pressure(kgf/cm ²)	排气量 Capacity	功率 Motor Power(kW)	驱动 Drive	
					50Hz	60Hz
LHC-22	1500	30	4.3	1.5	D	V
	1800	30	5.0	1.5	V	D



Code:158015

☼ 供应商: 2423

☼ Supplier: 2423

CZ-20/30S机组系列压缩机Series Compressor

单列立式两级级差活塞式

Single Row Vertical Type Differential Piston Two Stage Compression

机组型号Type	CZ-20/30SZK	CZ-20/30SZK	CZ-20/30SZK
冷却方式Cooling Mode	Water-cooling		
排气量Capacity(m ³ /h)	20		
排气压力	30		
Discharge Pressure(kgf/cm ²)	30		
转速Speed (r/min)	1000	960	1000
电机功率Motor Power (kW)	5.5		
外形尺寸	900 × 650 × 690	1120 × 502 × 820	1120 × 502 × 568
Dimension(L × W × H)(mm)	900 × 650 × 690	1120 × 502 × 820	1120 × 502 × 568
重量Weight(kg)	230		

Code:158016

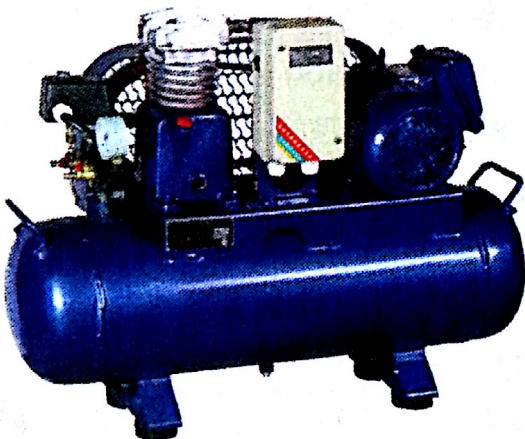
☼ 供应商: 2423

☼ Supplier: 2423

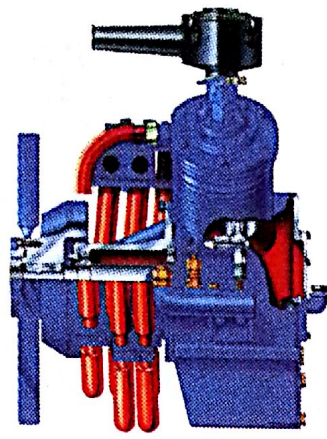
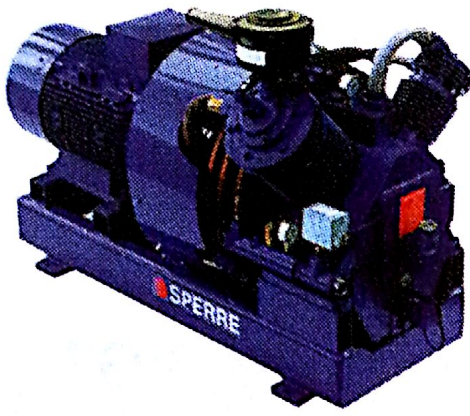
CZ-2.2/10F机组系列压缩机Series Compressor

单列立式单级活塞式

Single Row Vertical Type Differential Piston Single Stage Compression



机组型号Type	CZ-2.2/10F
冷却方式Cooling Mode	Air-cooling
排气量Capacity(m ³ /h)	2.2
排气压力Discharge Pressure(kgf/cm ²)	10
转速Speed (r/min)	750
电机功率Motor Power (kW)	0.75
外形尺寸Dimension(L × W × H)(mm)	740 × 320 × 620
重量Weight(kg)	52



Code:158042

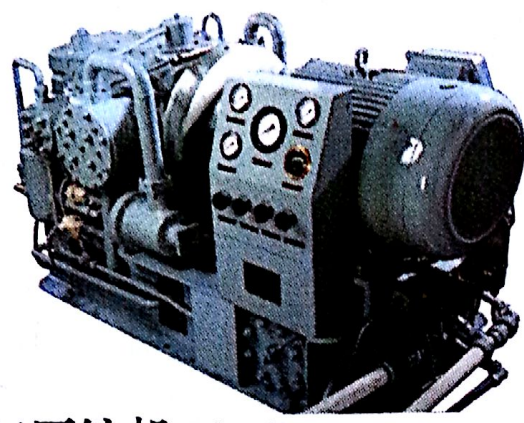
☼ 供应商: 3290

☼ Supplier: 3290

空冷压缩机 Air Cooled Compressors

型号 Type	HL2/120	HL2/140	HL2/160
缸径 Cylinder Dia.LP(mm)	120	140	160
缸径 Cylinder Dia.HP(mm)	77	77	77
行程 Stroke(mm)	100	100	100
重量 Weight(compr./motor/baseplate) (kg)	573	590	650
最大压力 Max.Delivery Pressure(bar)	40	40	40
最大转速 Max. Speed(r/min)	1800	1800	1800
旋转方向 Rotation Direction	Anti-clockwise(looking at the drive end)		

型号 Type	HL2/120			HL2/140			HL2/160				
转速 Speed(r/min)	975	1175	1450	975	1175	1450	875	975	1175	1450	
频率 Frequency(Hz)	50	60	50	50	60	50	60	50	60	50	
25 bar	排气量 Capacity (m ³ /h)	52	62	77	75	90	111	89	99	117	144
	功率 Power (kW)	12.34	13.4	18.5	15.5	18.7	23.6	17.4	19.4	23.5	29.6
	热损耗 Thermal Loss (Kcal/h)	8514	10372	13081	11997	14474	18266	13476	15016	18189	22910
30 bar	排气量 Capacity (m ³ /h)	50	59	74	73	88	108	86	96	114	140
	功率 Power (kW)	12.9	14.0	19.3	15.9	19.2	24.3	17.9	20.0	24.2	30.5
	热损耗 Thermal Loss (Kcal/h)	8901	10836	13622	12307	14861	18808	13892	15480	18731	23607
35 bar	排气量 Capacity (m ³ /h)	47	55	70	70	85	104	82	92	110	134
	功率 Power (kW)	13.4	14.5	19.9	16.2	19.5	24.8	18.2	20.3	24.6	31.0
	热损耗 Thermal Loss (Kcal/h)	9211	11223	14087	12539	15093	19195	14101	15712	19040	23994
40 bar	排气量 Capacity (m ³ /h)	42	47	62	65	80	96	76	84	102	124
	功率 Power (kW)	13.8	15.0	20.6	16.5	19.8	25.3	18.5	20.6	25.0	31.5
	热损耗 Thermal Loss (Kcal/h)	9520	11610	14551	12771	15325	19582	14309	15944	19359	24381



Code: 158064

☼ 供应商: 2335

☼ Supplier: 2335

空气压缩机 Air Compressor

机型 Engine Type	转速 Speed (r/min)	排气压力 Exhaust Pressure (Mpa)	排气量 Capacity (m ³ /h)	功率 Power (kW)	冷却方式 Cooling Method	外形尺寸 Dimension L × W × H(mm)
JCH30/3.0(w)	750	3.0	30	18.5	Water Cooling	1300 × 740 × 1100
JCH160/3.0(w)	980	3.0	160	37	Water Cooling	1800 × 860 × 1100
JCH360/3.0(w)	1450	3.0	360	75	Water Cooling	2000 × 980 × 1200
JCH720/3.0(w)	1450	3.0	720	150	Water Cooling	3000 × 900 × 1200
JCH30/9.0(w)	750	9.0	30	18.5	Water Cooling	1300 × 740 × 1100
JCH60/9.0(w)	1450	9.0	60	28	Water Cooling	1300 × 740 × 1100
JCH120/9.0(w)	980	9.0	120	37	Water Cooling	1800 × 860 × 1200
JCH160/9.0(w)	1450	9.0	160	45	Water Cooling	1800 × 860 × 1200
JCH50/15(w)	750	15	50	18.5	Water Cooling	1800 × 860 × 1200
JCH100/15(w)	980	15	100	37	Water Cooling	1800 × 860 × 1200
JCH150/15(w)	1450	15	150	45	Water Cooling	1900 × 860 × 1200
JCH120/25(w)	980	25	120	45	Water Cooling	1900 × 860 × 1200
JCH90/35(w)	980	35	90	45	Water Cooling	1800 × 860 × 1200
JCH120/35(w)	1450	35	120	55	Water Cooling	1800 × 860 × 1200
JCH100/40(w)	980	40	100	45	Water Cooling	2000 × 1000 × 1300
JCH150/40(w)	1450	40	150	55	Water Cooling	2000 × 1000 × 1300
JCH30/3.0	750	3.0	30	18.5	Air Cooling	800 × 740 × 1000
JCH50/3.0	980	3.0	50	28	Air Cooling	800 × 740 × 1000
JCH90/3.0	1450	3.0	90	37	Air Cooling	910 × 760 × 1200
JCH30/9.0	750	9.0	30	18.5	Air Cooling	910 × 740 × 1100
JCH60/9.0	1450	9.0	60	28	Air Cooling	910 × 740 × 1100
JCH100/9.0	1450	9.0	100	37	Air Cooling	1100 × 860 × 1200
JCH30/15	750	15	30	18.5	Air Cooling	910 × 740 × 1100
JCH60/15	980	15	60	28	Air Cooling	1000 × 740 × 1200
JCH90/15	1450	15	90	37	Air Cooling	1000 × 740 × 1200