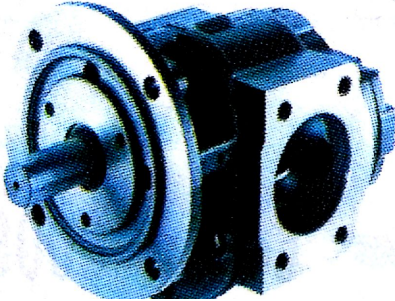
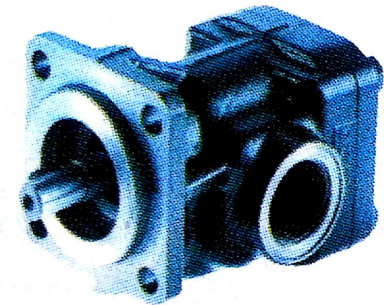


2CY型齿轮式润滑泵 Gear Lubricating Pump

流量 Capacity (m ³ /h)	1.08 ~ 29
压力 Pressure (Mpa)	1.0 ~ 1.0
真空度 Vacuum (-Mpa)	0.05
进出口径 Diam (Inch)	3/4 " ~ 3 "
功率 Power (kW)	0.75 ~ 11

☼ Supplier: 3406

船舶柴油机用KF主润滑与预润滑泵 Lubricating Pump

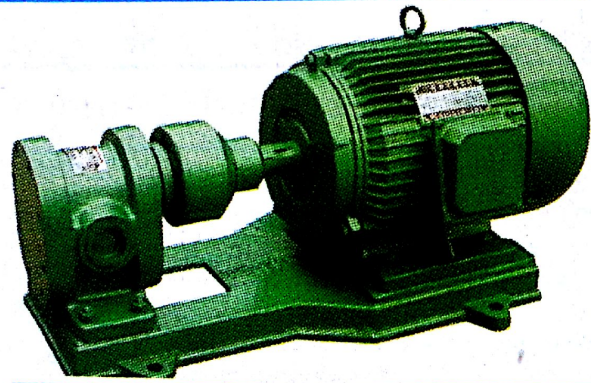


排量 (cm ³ /r)	0.5...730
工作压力 Working Pressure (bar)	≤25
速度 Speed (l/min)	...3000
粘度 Viscosity (mm ² /S)	12...20000 (std. pump)
选配 Option	Integral type safety valve

2CY型齿轮式润滑泵 Gear Lubricative Pumps

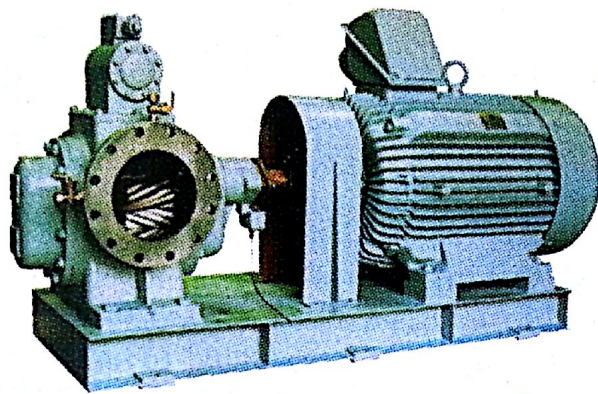
2CY系列齿轮润滑泵主要用于各种机械设备中的润滑系统中输送润滑油，适用于输送粘度在 10°E （75C.s.t）以下，温度在 300°C 以下的具有润滑性的油料，不锈钢齿轮泵可输送食用油料、饮料等。泵本身不带安全阀。轴封有骨架油封、机械密封、填料密封三种型式。

2CY series gear and lubricational pump is mainly to carry the lubricator in various lubricating system of mechanical equipments also it's suitable to carry the oils with the lubricational feature and their viscosity should be below 10°E (75c.s.t) and the temperature should be less than 300°C , furthermore, the gear pump in stainless steel can transport the edible oils, beverages and so on. The pump hasn't valve itself. Shaft seal has skeleton oil seal mechanical seal and stuffing seal.



流量FlowRate(m^3/h)	1.08 ~ 29
压力Pressure(MPa)	2.5 ~ 0.36
真空度Vaccum ($\text{m.H}_2\text{O}$)	5
进出口径Diameter(mm)	75
进出口距离Distance(mm)	95 ~ 200
配用电动机功率Motor Power(kW)	0.75 ~ 7.5

⚓ Notes: Certificate BV, CCS.



Code: I40015

☼ 供应商: 3160

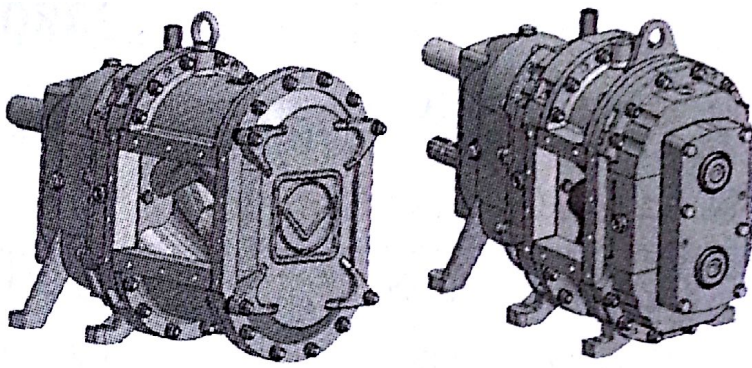
☼ Supplier: 3160

HG齿轮泵HG Gear Pumps

<p>温度: 最大工作油温为80℃。 法兰: 进出口法兰符合JIS 10K标准。 处理能力: 表格中参数实现条件: 输送液体粘度为25.8 mm²/s, 排出口压力为0.60 MPa, 吸入口压力为-0.05~0.20MPa。</p>	<p>Temperature: Maximum handling oil temperature is 80℃. Frange: Both suction and discharge is JIS 10K. Capacity: The following capacity shows at viscosity of 25.8 mm²/s with discharge pressure of 0.60 MPa. The allowable suction pressure range is -0.05~0.20MPa at the pump suction.</p>
--	--

型号 Type	口径Bore(mm) Suc. × Dis.	处理能力Capacity (m ³ /h)				泵重量 Weight of Pump (kg)
		60Hz		50Hz		
		1200min ⁻¹	900min ⁻¹	1000min ⁻¹	750min ⁻¹	
HG-35	125 × 100	35	-	29	-	138
HG-40	150 × 125	40	-	33	-	160
HG-50	150 × 125	50	-	40	-	155
HG-65	150 × 125	-	65	-	55	230
HG-80	150 × 125	-	80	-	65	230
HG-90	150 × 125	-	90	-	75	230
HG-100	200 × 150	-	100	-	85	320

↓ Notes: Certificate ABS, BV, CCS, NK.



Code: 140022

☼ 供应商: 2343

☼ Supplier: 2343

转子泵 Rotary Lobe Pumps

型号 Type		理论排量 Rated Discharge		最大工作压力 Max. Working Pressure			最大工作扭矩 Working Torque (Valid for NBR-elastomer)		
VXI36	VXI36QD Marathon	Nmax=800r/min		VX..QD	VX..Q	VX..QD Marathon	VX..QD	VX..Q	VX..QD Marathon
		(l/rev)	(m³/h)	(bar)	(bar)	(bar)	(N·m)	(N·m)	(N·m)
70	140 (70/70)	1.27	60	12	10	16	280	240	400
105	210 (105/105)	1.90	90	12	10	16	415	355	580
140	280 (140/140)	2.53	120	12	8	14	550	390	675
210	420 (210/210)	3.80	180	10	5	12	695	395	860

型号 Type		理论排量 Rated Discharge		最大工作压力 Max. Working Pressure			最大工作扭矩 Working Torque (Valid for NBR-elastomer)		
VXI86	VXI86QD Marathon	Nmax=600rpm		VX..QD	VX..Q	VX..QD Marathon	VX..QD	VX..Q	VX..QD Marathon
		(l/rev)	(m³/h)	(bar)	(bar)	(bar)	(N·m)	(N·m)	(N·m)
92	184 (92/92)	3.56	125	-	10	16	-	675	1100
130	260 (130/130)	5.03	180	12	10	16	1100	940	1510
184	368 (184/184)	7.12	250	12	8	14	1540	1090	1850
260	520 (260/260)	10.06	360	10	5	12	1835	1035	2205
368	-	14.24	510	8	2	-	2100	740	-

⚠ Notes: Certificate GL.

齿轮泵 Gear Pumps

	型号 Type	流量 Flow Rate (m ³ /h)	扬程 Lift(m)	转速Speed (r/min)	适用范围 Application
	ALG Horizontal Internal bearing	1 ~ 125	0.2 ~ 0.8	975/1150	F.O. Transfer L.O. Transfer Lubricating Oil
	TLG TLGK Horizontal Internal bearing	0.1 ~ 3	0.2 ~ 1.6	975/1150	F.O. Transfer
	ALGV Vertical Internal bearing	20 ~ 225	0.2 ~ 1.5	975/1150	F.O. Transfer L.O. Transfer Lubricating Oil