

Code: I43001

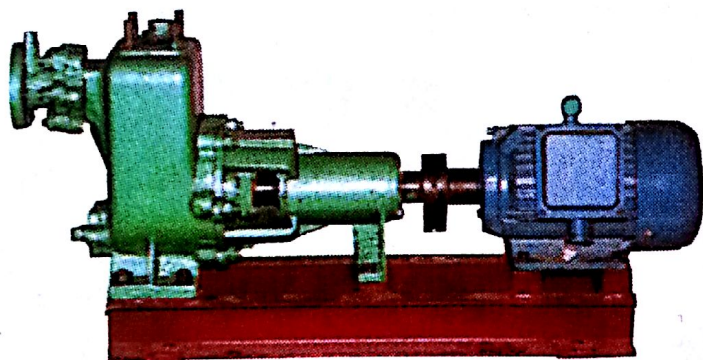
☼ 供应商: 2602

☼ Supplier: 2602

CWL系列船用卧式离心泵

CWL Series Marine Horizontal Centrifugal Pump(50Hz/3Ph/380V)

型号规格 Type	32cwl-4	32cwl-3	40cwl-5	40cwl-4	40cwl-3	150cwl <sub>1</sub> -18	200cwl <sub>1</sub> -12	200cwl <sub>1</sub> -18
流量 Capacity (m <sup>3</sup> /h)	4	4	8	8	8	192	360	480
扬程 Head (m)	21	30	21	30	42	18.5	43	30
转速 Speed (rpm)	2950	2950	2950	2950	2950	1740	1740	1740
汽蚀余量 NPSHr (m)	4	4	4	4	4	5	5	5
吸入高度 Suction Head (m)	6	6	6	6	6	5	4	4
轴功率 Shaft Power (kW)	0.47	0.78	0.85	1.31	2.13	11.4	45.2	-
效率 Efficiency (%)	53	42	59	50	43	81	81	83
电机功率 Motor Power (kW)	1.1	1.5	1.1	2.2	3	15	55	55
泵组重量 Weight (kg)	62	60	50	65	87	312	526	508



Code: I43002

☼ 供应商: 2602

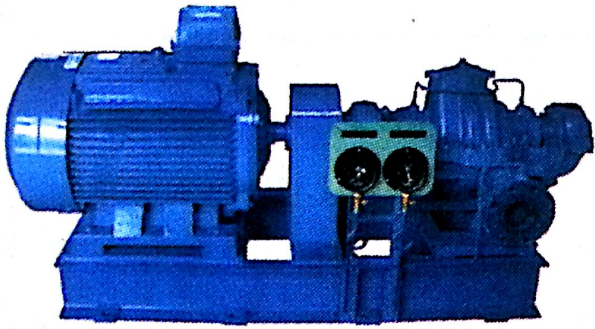
☼ Supplier: 2602

CWZ系列船用卧式自吸离心泵 (50Hz/3Ph/380V)

CWZ Series Marine Horizontal Self-Priming Centrifugal Pump

型号 Type	32cwz-5	40cwz-6	40cwz-5	40cwz-4	100cwz <sub>1</sub> -18	100cwz <sub>1</sub> -14	100cwz <sub>1</sub> -11	100cwz <sub>1</sub> -8	100cwz <sub>1</sub> -6	150cwz <sub>1</sub> -3.5
流量 Capacity(m <sup>3</sup> /h)	8	12	12	12	120	120	120	120	120	130
扬程 Head (m)	21	21	30	42	30.2	43.2	60.5	86.4	122.4	115
转速 Speed (rpm)	2950	2950	2950	2950	3540	3540	3540	3540	3540	1740
汽蚀余量 NPSHr (m)	4	4	4	4	5	5	5	5	5	4.2
吸入高度 Suction Head (m)	6	6	6	6	5	5	5	5	5	5
轴功率 Shaft Power (kW)	1.2	1.32	1.92	2.92	14.5	21.7	34.1	51.3	79.7	-
效率 Efficiency (%)	38	52	51	47	68	65	58	55	59	55
电机功率 Motor Power (kW)	1.5	2.2	3	4	18.5	30	37	55	75	90
单泵重量 Weight (kg)	28	42	50	50	125	128	135	152	165	-





Code: I43003

☸ 供应商: 2734

☸ Supplier: 2734

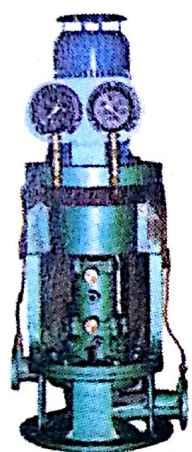
HDS 系列 船用离心泵 Marine Centrifugal Pumps

型号 Type	流量 Flow Rate (m <sup>3</sup> /h)	扬程 Lift (m)	转速 Speed (rpm)	功率Power (kW)	
				轴功率Shaft Power	电机功率Motor Power
HDS-150MB-37	60	75	1500	22	37
	120	62		30.4	
	150	52		32.2	
HDS-200MA	-75	65	1500	51.7	75
		85		52.6	
		125		67.5	
HDS-200MA	-90	85	1500	59	90
		125		78	
		140		76	

# CLLa 船用立式离心泵

## The CLLa Series Marine Vertical Centrifugal Pump

50Hz/Table 1



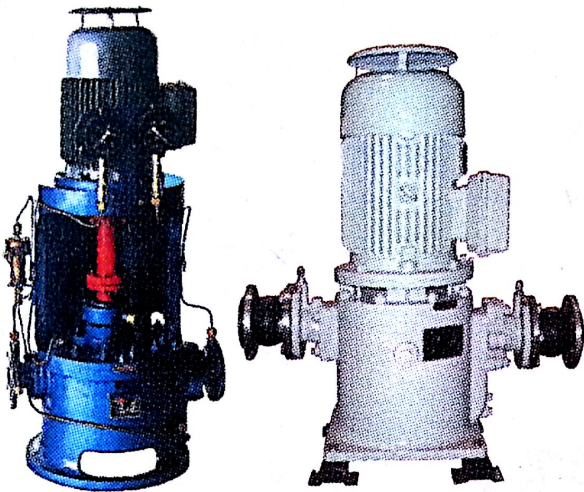
型号 Pump's Type		50CLLa-6	50CLLa-4	250CLLa-21	250CLLa-15	250CLLa-16
流量 Quantity of Flow (m <sup>3</sup> /h)		12.5	12.5	500	500	600
扬程 Lift (m)		20	32	20	32	20
转速 Rev. Speed (rpm)		2900	2900	1450	1450	1450
功率 Power(kW)	轴功率 Shaft	1.2	2	33.5	55	40.5
	电机功率 Motor	1.5	3	37	75	55
气蚀余量 NPSH (m)		2.8	2.8	4	4	4.5
外型尺寸 Dimensions(mm)		455 × 395 × 1002	460 × 395 × 1057	890 × 900 × 2015	890 × 900 × 2140	880 × 700 × 2268

60Hz/Table 2

型号 Pump's Type		50CLLa <sub>1</sub> -6	50CLLa <sub>1</sub> -4	50CLLa <sub>1</sub> -3	250CLLa <sub>1</sub> -21	250CLLa <sub>1</sub> -15	250CLLa <sub>1</sub> -16
流量 Quantity of flow (m <sup>3</sup> /h)		15	15	15	600	600	720
扬程 Lift (m)		28.8	46	72	28.8	46	28.8
转速 Rev. Speed (rpm)		3480	3480	3480	1740	1740	1740
功率 Power(kW)	轴功率 Shaft	2	3.5	6.3	58	94	69.7
	电机功率 Motor	3	5.5	7.5	75	110	90
气蚀余量 NPSH (m)		3	3	3	4.5	4.5	5
外型尺寸 Dimensions (mm)		455 × 395 × 1057	460 × 395 × 1162	500 × 460 × 1272	890 × 900 × 2235	890 × 900 × 2505	880 × 700 × 2413



Code:143018



☼ 供应商: 2066

☼ Supplier: 2066

### CLZ系列船用立式自吸离心泵

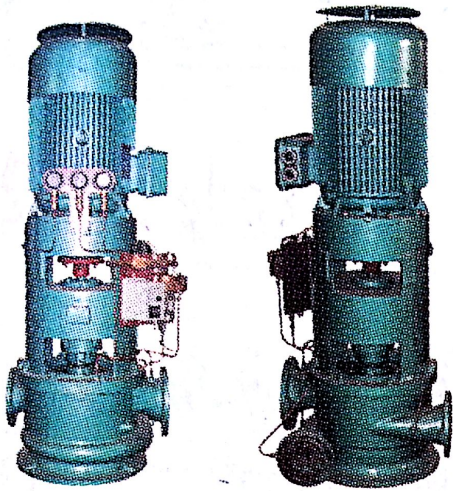
### CLZ Series Marine Vertical Self-priming Centrifugal Pumps

用途:适用于船舶压载舱底泵、冷却泵及消防泵等。可用于输送温度不高于70°C的海水、淡水及无腐蚀性的其他液体介质。

Application:used at cabin bottom to cool water and fight fire.It is able to carry sea water under 70°C. Fresh water and other nonerrodng liquid.

流量 Flow Rate(m <sup>3</sup> /h)	扬程 Lift(m)	转速 Speed(r/min)	汽蚀余量 NPSHr(m)	轴功率 Shaft Power(kW)	驱动功率 Motor Power(kW)	重量 Weight(kg)
5 ~ 450	15 ~ 120	1450 ~ 2900	3.2 ~ 6	1.6 ~ 95.1	2.2 ~ 110	126 ~ 718

⚓ Notes: Certificate ABS, CCS, DNV, GL, LR, ZY.



Code: 143020

☼ 供应商: 2066, 2490

☼ Supplier: 2066, 2490

### CLN 系列船用立式双级双出口离心泵

### CLN Series Double Step Double Section Marine Vertical Centrifugal Pumps

用途: CLN 系列船用立式双级双出口离心泵可作舱底压载、总用、冷却及消防泵等用。可用于输送温度不高于80°C的海水、淡水及无腐蚀性的其他液体介质。

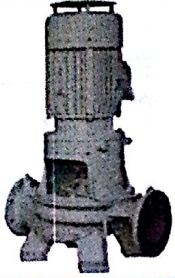
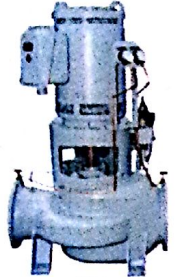



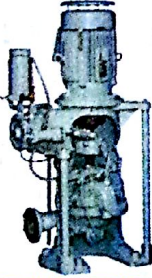
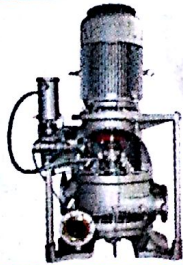
Application: used at cabin bottom to cool water and fight fire, Pumping seawater, freshwater and other noneroding liquid under 80°C.

流量 Flow Rate(m <sup>3</sup> /h)	扬程 Lift(m)	转速 Speed(r/min)	汽蚀余量 NPSHr(m)	驱动功率 Motor Power(kW)	重量 Weight(kg)
51 ~ 389/51 ~ 182	17 ~ 36.5/1.5 ~ 86	1450	2.8 ~ 5.1	18.5 ~ 75	510 ~ 1082

⚓ Notes: Certificate ABS, CCS, DNV, GL, LR, ZY.



# 离心泵 Centrifugal Pumps

	型号 Type	流量 Flow Rate(m <sup>3</sup> /h)	扬程 Lift (m)	转速 Speed (r/min)	适用范围 Application
	EMC Vertical Single stage Single suction Close coupled	3~500	10~150	1450/2950 1750/3550	Cooling water Ballast General service ballast
	EMD Vertical Single stage Double suction Close Coupled	250~2800	8~60	970/1450 1150/1750	Cooling water Ballast Circulating water
	ESC Vertical Single stage Single suction	25~500	10~150	1450/2950 1750/3550	Cooling water Ballast General service ballast
	ESD Vertical Single stage Double suction	250~2800	8~60	970/1450 1150/1750	Cooling water Ballast Circulating water
	VS-S Vertical split case Operating in series or parallel	60~700	15~82	1450/1750	Fire fighting Ballast General service ballast
	VS Vertical split case Two-stage	60~700	15~82	1450/1750	Fire fighting Ballast General service ballast
	ESN Vertical Operating in single stage or two stages	50~250	20~140	1450/1750	Fire fighting Ballast General service ballast

## 卧式离心泵 Horizontal Centrifugal Pumps

	型号 Type	流量 Flow Rate (m <sup>3</sup> /h)	扬程 Lift (m)	转速 Speed (r/min)	适用范围 Application
	BH BHR Single-stage Single-suction	2 ~ 80	5 ~ 80	1450/1750 2900/3500	Cooling Water Fresh Water Sanitary
	BHD Single-stage Single-suction	2 ~ 15	10 ~ 55	1450/1750 2900/3500	Cooling Water Fresh Water Sanitary
	CR CRD Single-stage Single-suction	2 ~ 130	10 ~ 30	1450/1750	Cooling Water Fresh Water Sanitary
	SH SHR Single-stage Single-suction (Self-priming)	2 ~ 80	15 ~ 65	2900/3500	Fresh Water Sanitary Cooling water