

Code:159002

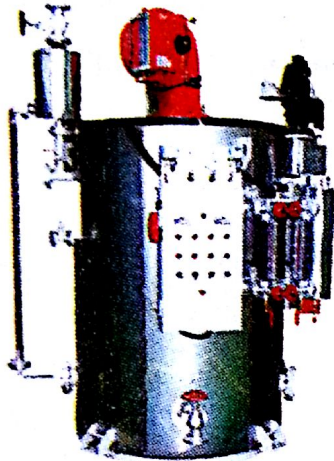
☼ 供应商: 3571

☼ Supplier: 3571

船用辅助锅炉 Marine Auxiliary Boiler

型号 Type	VWH-400	VWH-600	VWH-800	VWH-1200	VWH-1600	VWH-2000	
最高工作压力Max. Working Pressure(MPa)	1.0	1.0	1.0	1.0	1.0	1.0	
传热面积Heating Surface Area(m ²)	6.4	7.2	9.5	13.5	17.9	22.4	
相当蒸发量Equivalent Evaporation(kg/h)	400	600	800	1200	1600	2000	
实际蒸发量Actual Evaporation (Water60°C;Steam0.7MPa)(kg/h)	359	538	717	1076	1434	1793	
燃油(重油)Fuel Oil(Heavy Oil)	C Heavy Oil						
燃料消耗量Fuel Consumption(kg/h)	26	39	52	77	102	127	
锅炉效率Boiler Efficiency(%)	85	85	85	87	87	87	
设备功率Installed Electric Capacity(kW)	5.9	7.6	9.3	12.8	16.0	20.5	
燃料泵 F. Q Pump	排出量Capacity(L/h)	136	136	136	136	252	252
	排出压力ressure(MPa)	1.8	1.8	1.8	1.8	1.8	1.8
	电机 Motor(kW)	0.4	0.4	0.4	0.4	0.75	0.75
给水泵 F.W Pump	排出量Capacity(L/h)	2000	2000	2000	2000	2000	3900
	排出压力Pressure(MPa)	1.08	1.08	1.08	1.08	1.08	1.08
	电机Motor(kW)	2.2	2.2	2.2	2.2	2.2	3.7
重量Dry Weight (kg)	1950	2160	2900	3630	4000	4260	

↓ Notes: 电源为交流三相220V或440、60Hz。 Electric Source is 60Hz, 3ΦAC220V or 440V.



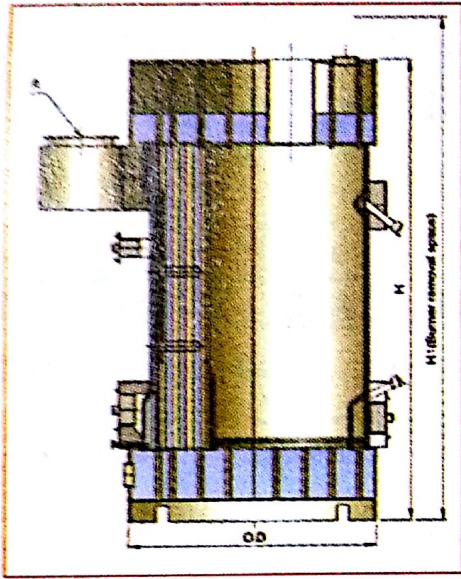
Code:159005

☼ 供应商: 3542

☼ Supplier: 3542

蒸汽锅炉 TSV-M Series Steam Boiler

型号Type	TSV M1000	TSV M1500	TSV M2000	TSV M2500	TSV M3000	
加热能力Heat Output(kg/h)	1000	1500	2000	2500	3000	
工作压力Working Pressure(kg/cm ²)	7					
表面积Surface Area(m ²)	26	36	45	62	75	
有效率Efficiency(%)	86	86	86	86	86	
功率Power(kW)	440 ~ 220/5.0		440 ~ 220/7.5		440 ~ 220/13	
水位Water (Automatic)	high/Low/Off					
水容量Water Contents(m ³)	1.31	1.54	1.87	2.15	2.6	
气/油耗量Gas Consumption	LNG(m ³ /h)	67	97	129	159	198
	LPG(m ³ /h)	48	70	95	118	142
	Diesel(kg/h)	68	100	136	171	191
	Bunker (kg/h)	72	108	145	182	218
直径Dia.(mm)	Steam Vavle	32	40	40	40	40
	Water Inlet	40	40	40	40	40
	Water Outlet	50	65	80	80	80
	Oil Inlet	40	40	40	40	40
	Gas Inlet	300	350	400	450	450



Code: 159006

☼ 供应商: 3212

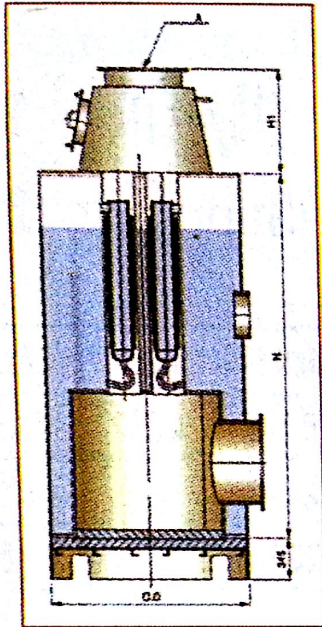
☼ Supplier: 3212

PB型船用燃油锅炉 Marine Oil Fired Boiler PB-TYPE

型号 Type	蒸发量(t/h) Steam Capacity	工作压力(kg/cm ²) Working Pressure	外形尺寸 Dimension(mm)			废气排口(mm) Flue gas Outlet A	重量 Weight(t)
			D	H	H1		
PB01	12	7.0/16.0	2500	5950	8150	700	19
PB02	16	7.0/16.0	2900	6150	8350	700	24
PB03	20	7.0/16.0	3050	6300	8500	900	27
PB04	25	7.0/16.0	3150	7150	9550	900	34
PB05	30	7.0/16.0	3400	7350	9750	1000	35
PB06	35	7.0/16.0	3700	7200	9600	1000	40
PB07	40	7.0/16.0	3700	7600	10400	1100	43

⚓ Notes: 1. Vertical top-fired two drum consist of pin tubes; 2. Dry weight of boiler including mountings, burner and refractory but excluding water; 3. Normal Working Pressure is available to increase of decrease according to requirement; 4. Certificate ABS, BV, GL, KR, LR, NK.

KR, LR, NK.



Code: I59007

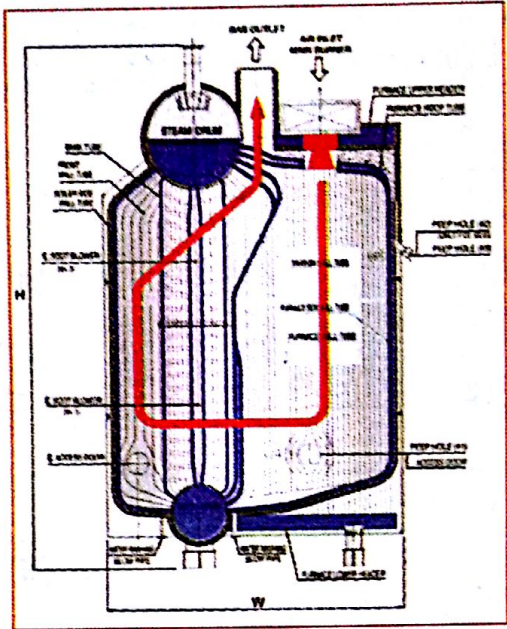
☼ 供应商: 3212

☼ Supplier: 3212

PA型船用燃油锅炉 Marine Oil Fired Boiler PA-TYPE

型号 Type	蒸发量(t/h) Steam Capacity	工作压力(kg/cm ²) Working Pressure	外形尺寸 Dimension(mm)			废气排口(mm) Flue gas Outlet A	重量 Weight(t)
			O.D	H	HI		
PA01	1.5	7.0	1600	3365	850	300	4.5
PA02	2.5	7.0	1800	3565	850	400	6.2
PA03	4.0	7.0	2000	4150	850	500	8.3
PA04	6.5	7.0	2300	4760	850	650	11.3

⚓ Notes: 1. Vertical cylindrical consist of pin tubes; 2. Dry weight of boiler including mountings, burner and refractory but excluding water; 3. Normal Working Pressure is available to increase or decrease according to requirement; 4. Certificate ABS, BV, DNV, GL, KR, LR, NK.



Code: I59010

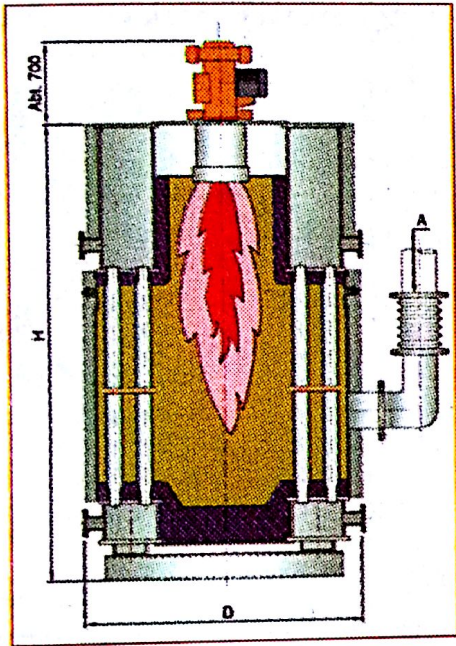
☼ 供应商: 3212

☼ Supplier: 3212

MD型船用锅炉 Marine Boiler MD-TYPE

型号 Type	蒸发量(t/h) Steam Capacity	工作压力(kg/cm ²) Working Pressure	外形尺寸 Dimension(mm)			重量 Weight(t)		燃烧器数量 Number Of burner
			H	W	L	dry	Water	
MD01	20	16/22	6640	4280	3660	36.5	10.2	1.0
MD02	25	16/22	7090	4280	3660	39.0	10.6	1.0
MD03	30	16/22	7440	4680	3950	42.0	15.0	1.0
MD04	35	16/22	7890	4680	3950	44.5	17.4	1.0
MD05	40	16/22	8390	5190	4620	50.5	20.0	2.0
MD06	45	16/22	8790	5190	4620	54.5	23.2	2.0
MD07	50	16/22	9190	5380	4810	59.0	24.2	2.0
MD08	55	16/22	9590	5380	4810	61.0	25.2	2.0
MD09	60	16/22	7940	5290	6260	67.4	27.3	2.0
MD10	70	16/22	8440	5290	6260	71.4	28.2	2.0
MD11	80	16/22	9040	5480	6810	84.6	32.6	2.0
MD12	90	16/22	9440	5480	6810	90.8	33.9	2.0
MD13	100	16/22	9940	6030	6810	99.8	35.0	2.0
MD14	110	16/22	10440	6030	7640	116.2	44.5	2.0

⚓ Notes: 1. (L) in dimension means length of steam drum; 2. Weight includes mounting, burner and refractory without water; 3. Normal Working Pressure is available to increase or decreased according to requirement; 4. Certificate ABS, BV, DNV, GL, KR, LR, NK.



Code:159012

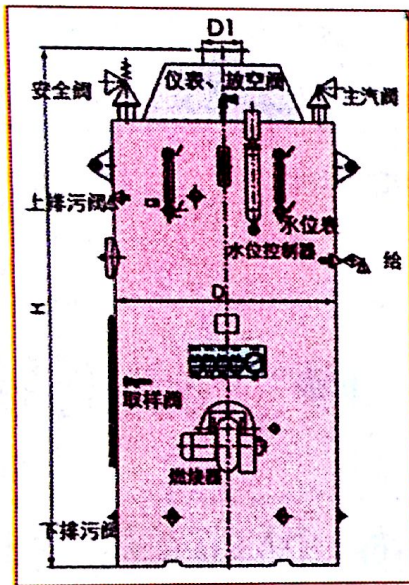
☼ 供应商: 3212

☼ Supplier: 3212

MS型船用锅炉 Marine Boiler MS-TYPE

型号 Type	蒸发量 Steam Capacity (t/h)	工作压力 Working Pressure (kg/cm ²)	外形尺寸 Dimension(mm)		废气出口 Flue Gas Outlet A (mm)	重量 Weight(t) dry
			H	D		
MS-01	0.3	7.0	1810	1040	250	1930
MS-02	0.5	7.0	1900	1040	250	2140
MS-03	0.7	7.0	1870	1305	300	2870
MS-04	1.0	7.0	2230	1305	350	3700
MS-05	1.4	7.0	2360	1475	350	3930
MS-06	1.7	7.0	2660	1475	400	4190
MS-07	2.2	7.0	3020	1475	450	4800

⚓ Notes: 1. Special design capacity 150kg/h, 180kg/h, 200kg/h, 300kg/h; 2. Certificate ABS BV, DNV, GL, KR, LR, NK.



Code: 159016

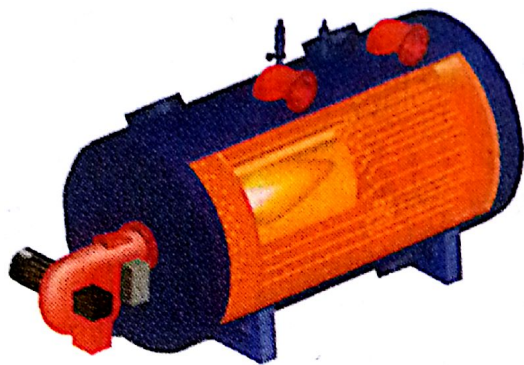
☼ 供应商: 2123

☼ Supplier: 2123

LSK型立式燃油锅炉 Lsk-type Vertical Oil-fired Boiler

型号 Type	额定蒸发量 Rated Steam Capacity	工作压力 Working Pressure	外形尺寸 Dimension(mm)			重量 Weight
	t/h	MPa	H	D	D1	kg
LSK0.5-0.7	0.5	0.7	2900	1100	250	2500
LSK1.0-0.7	1.0	0.7	3800	1250	300	4000
LSK3.0-0.7	3.0	0.7	4700	1800	350	9000
LSK5.0-0.7	5.0	0.7	5300	2230	500	16000
LSK6.0-0.7	6.0	0.7	5600	2230	600	18000
LSK8.0-0.7	8.0	0.7	5900	2450	600	20000
LSK10.0-0.7	10.0	0.7	6300	2640	700	22000
LSK12.0-0.7	12.0	0.7	6750	2840	800	24000

↓ Notes: Certificate BV, CCS, LR, NK.



Code:159027

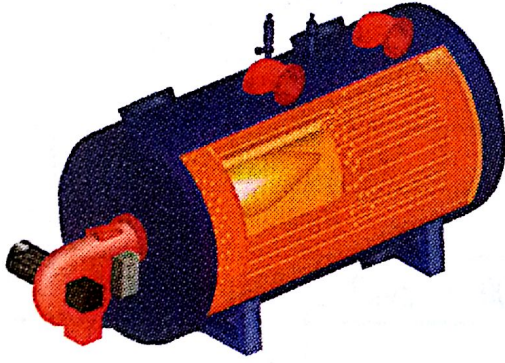
☼ 供应商: 3146

☼ Supplier: 3146

UNEX™ B 燃油锅炉 UNEX™ B Hot-water Boilers

型号 Type	热功率 Capacity (kW)	外形尺寸 Dimension (mm)	最大高度 Max. Height (mm)	出气口 直径 Gas Outlet(mm)	净重 Net Weight (kg)	工作重量 Operating. Weight(kg)	容水量 Water Volume(m³)
B-750	750	3145 × 1700 × 1400	2150	200	4180	6830	2.7
B-1000	1000	2945 × 1900 × 1600	2350	250	5090	5460	3.0
B-1700	1700	3550 × 2030 × 1730	2630	300	6650	12150	5.5
B-2000	2000	3750 × 2030 × 1730	2630	300	7360	13170	5.8
B-2700	2700	4125 × 2250 × 1950	2800	350	10380	19080	8.7
B-3400	3400	4675 × 2420 × 2120	3120	400	12880	22780	9.9
B-4000	4000	5075 × 2570 × 2270	3270	400	15400	27700	12.3

↓ Notes: Certificate ABS, BV, CCS, DNV, GL, KR, LR, NK, RINA.



Code: 159028

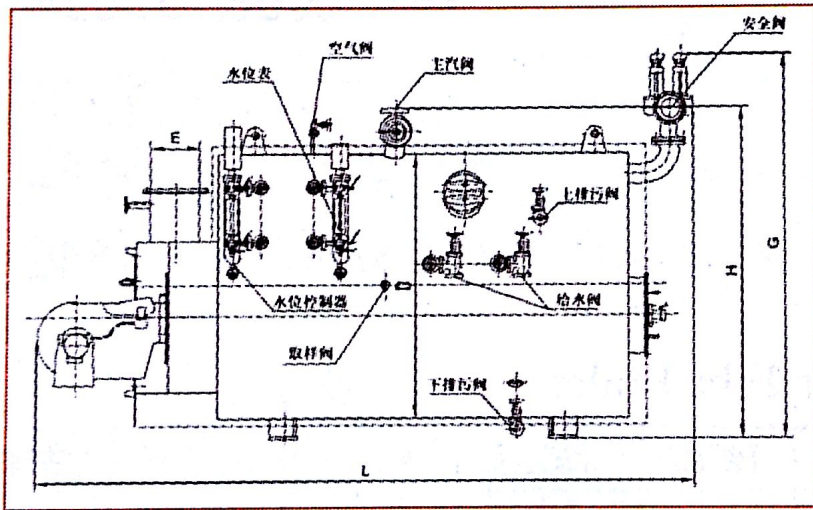
☼ 供应商: 3146

☼ Supplier: 3146

UNEX™ BH 燃油锅炉 UNEX™ BH Hot-water Boilers

型号 Type	热功率 Capacity (kW)	外形尺寸 Dimension (mm)	最大高度 Max.Height (mm)	出气口直 径 Gas Outlet(mm)	净重 Net weight (kg)	工作重 量Operating Weight (kg)	容水量 Water Volume(m³)
BH-1000	1000	3145 × 1900 × 1600	2350	200	4180	6480	2.3
BH-1500	1500	2945 × 2200 × 1900	2650	250	5090	8045	3.0
BH-2500	2500	3550 × 2400 × 2100	3000	300	6650	11130	4.5
BH-3000	3000	3750 × 2400 × 2100	3000	300	7360	12230	4.9
BH-4000	4000	4125 × 2700 × 2400	3250	350	10380	17450	7.1
BH-5000	5000	4675 × 2800 × 2500	3500	400	12880	21360	8.5
BH-6000	6000	5075 × 3000 × 2700	3700	400	15400	26660	11.3

↓ Notes: Certificate ABS, BV, CCS, DNV, GL, KR, LR, NK, RINA.



Code: 159031

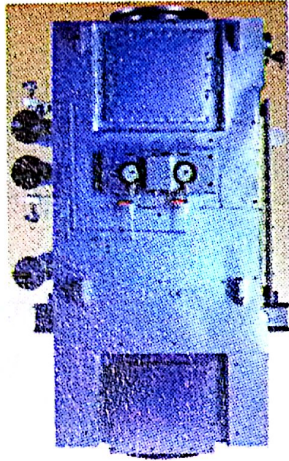
☼ 供应商: 2521

☼ Supplier: 2521

2WY、3WY系列船用燃油锅炉 Marine Oil Burning Boiler

型号 Type	蒸发量 Evaporation Capacity (kg/h)	工作压力 Working Pressure (MPa)	外形尺寸 Dimension(mm)				
			L	H	G	D	E
3WY0.5-0.7	500	0.7	2800	1700	1840	1380	250
3WY0.7-0.7	700	0.7	3020	1700	1840	1380	250
2WY1.0-0.7	1000	0.7	3305	1925	2095	1520	300
2WY1.2-0.7	1200	0.7	3415	1925	2155	1520	300
2WY1.5-0.7	1500	0.7	3865	2125	2355	1724	300
2WY2.0-0.7	2000	0.7	4065	2125	2355	1724	300
2WY2.5-0.7	2500	0.7	4350	2420	2805	1924	350
2WY3.0-0.7	3000	0.7	4785	2420	2805	1924	350
2WY4.0-0.7	4000	0.7	5155	2565	2900	2032	450

⚓ Notes: Certificate BV, CCS, NK.



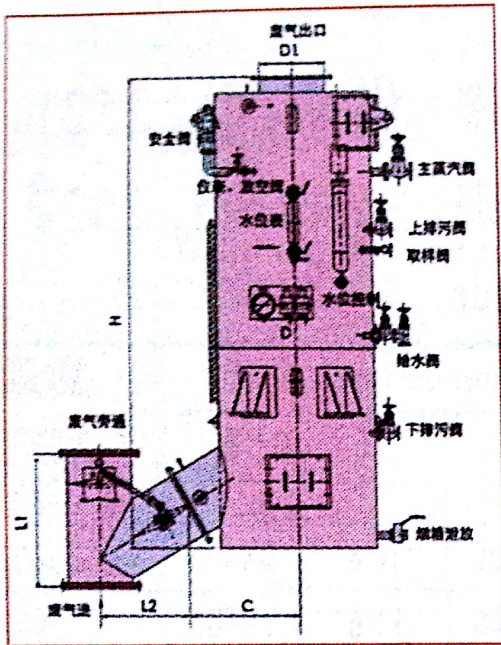
Code: I59036

☼ 供应商: 3571

☼ Supplier: 3571

KTH-S 废气热油器 Exhaust Gas Thermal Oil Heater

型号 Type	KTH-S11 (06)	KTH-S17 (08)	KTH-S25 (10)	KTH-S31 (11)	KTH-S41 (13)	KTH-S52 (15)	KTH-S65 (17)	KTH-S75 (17)	
最高使用温度 Max. Working Temp.	220 °C								
电源 Electric Power	AC 440V or 220V 60Hz 3P.								
传热面积 Heating Surface Area (m ²)	11.4	17.8	25.5	31.5	41.4	52.6	65.0	75.8	
热油保有量 Thermal Oil Capacity (L)	60	90	120	150	190	240	300	340	
尺寸 Dimensions (mm)	A	1200							
	B	660	816	972	7050	1206	1362	7518	7518
	C	1824	1927	2027	2127	2227	2327	2427	2627
	D	715							
	E	745							
	F	365	443	521	560	638	716	794	794
	M	1000							
重量 Weight (kg)	1500	1800	2300	2600	3200	3900	4600	5200	



Code: 159041

☼ 供应商: 2123

☼ Supplier: 2123

LFY型废气锅炉 Exhaust Gas Economizer Boiler

型号 Type	受热面积 Heating Surface	工作压力 Working Pressure	推荐适用主机功率 Engine Power	外形尺寸 Dimension(mm)		重量 Weight
	m ²	MPa	kW	H	D	kg
LFY35-0.7	35	0.7	1100 ~ 1600	3320	1020	3000
LFY55-0.7	55	0.7	1800 ~ 2400	3520	1220	3800
LFY70-0.7	70	0.7	2300 ~ 3000	3520	1320	4400
LFY85-0.7	85	0.7	3000 ~ 3800	3520	1450	5600
LFY100-0.7	100	0.7	3500 ~ 4500	3520	1550	7000

† Notes: Certificate CCS, BV, LR, NK.



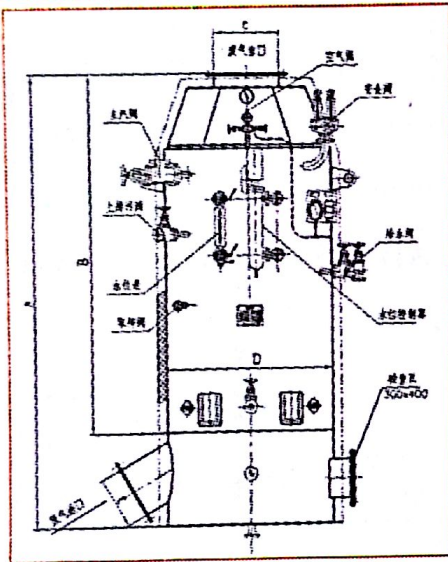
Code:159044

☼ 供应商: 3425

☼ Supplier: 3425

废气锅炉 Exhaust Gas Boiler

蒸发量 Steam Capacity(t/h)	0.35	0.35	0.35	0.35	0.35	0.35	0.35	0.35	0.35	0.35	0.35	0.35
工作压力 Working Pressur(MPa)	0.7	0.7	0.7	0.7	0.7	0.7	0.7	0.7	0.7	0.7	0.7	0.7
设计压力 Design Pressur(MPa)	0.9	0.9	0.9	0.9	0.9	0.9	0.9	0.9	0.9	0.9	0.9	0.9



Code:159046

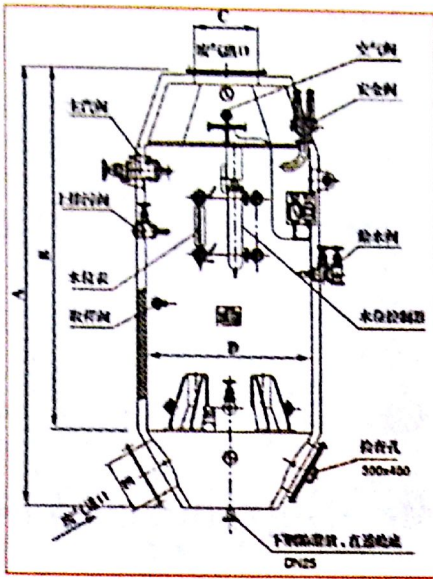
☼ 供应商: 2521

☼ Supplier: 2521

LFL系列船用废气锅炉 Marine Exhaust Boiler

型号 Type	受热面积 Heating Surface (m ²)	工作压力 Working Pressure (MPa)	外形尺寸 Dimension(mm)					重量 Weight (kg)
			A	B	C	D	E	
LFL36-0.5	36	0.5	3450	2805	DN400	1116	DN400	3300
LFL55-0.7	55	0.7	3535	2800	DN500	1216	DN400	3300
LFL67-0.7	67	0.7	3690	2830	DN500	1316	DN500	4120
LFL80-0.7	80	0.7	3750	2800	DN600	1520	DN600	5800
LFL112-0.7	112	0.7	3470	2585	DN700	1824	DN600	7400
LFL160-0.7	160	0.7	3750	2850	DN800	1924	DN700	9500
LFL180-0.7	180	0.7	4050	2950	DN800	2024	DN700	11000
LFL200-0.7	200	0.7	4250	3100	DN900	2432	DN800	12500
LFL250-0.7	250	0.7	4500	3200	DN900	2432	DN800	14500

Notes: Certificate BV, CCS, NK.



Code: 159047

☼ 供应商: 2268

☼ Supplier: 2268

LFL系列废气锅炉 Exhaust Gas Boiler

型号Type	受热面积	工作压力	外形尺寸				
	Heating Surface	Working Pressure	Dimension(mm)				
	(m ²)	(MPa)	A	B	C	D	E
LFL36-0.5	36	0.5	3405	2805	DN400	1116	DN400
LFL55-0.7	55	0.7	3400	2800	DN500	1216	DN400
LFL67-0.7	67	0.7	3430	2830	DN500	1316	DN500
LFL80-0.7	80	0.7	3620	2785	DN600	1520	DN600
LFL112-0.7	112	0.7	3470	2585	DN700	1824	DN600
LFL160-0.7	160	0.7	3750	2850	DN800	2024	DN700
LFL180-0.7	180	0.7	3800	3000	DN800	2024	DN700
LFL200-0.7	200	0.7	3900	3000	DN900	2232	DN800
LFL250-0.7	250	0.7	4100	3100	DN900	2432	DN800