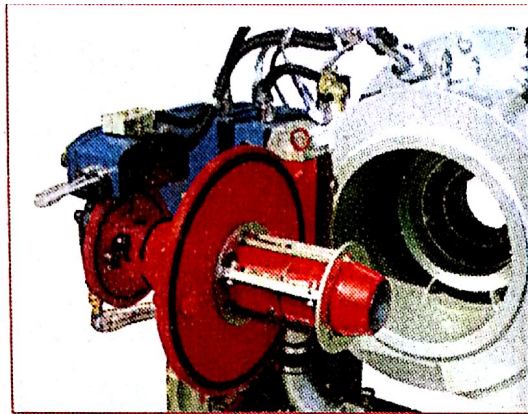
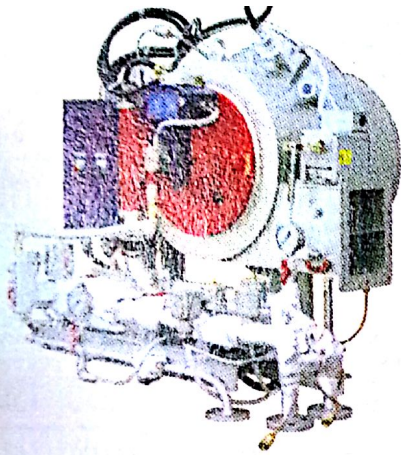


ZC型重油燃烧器 Heavy Oil Burner

规格Size	5	7	8	8/2	10	11	11/2
φ (mm)	180	220	240	265	265	325	400
l(mm)	144	225	235	268	270	370	356
L(mm)	686	766	766	766	945	950	974
H(mm)	652	730	770	770	880	1000	1116
H ₁ (mm)	495	556	556	590	672	715	715
R(mm)	695	760	760	760	965	965	965
d ₁ (mm)	M10	M10	M10	M12	M12	M12	M16
d ₂ (mm)	210	235	235	298	330	400	500
d ₃ (mm)	185	210	210	275	280	340	550
电动机型号Type of Motor	Y90S-2	Y100L-2	Y112M-2	Y112M-2	Y132S-2	Y160M-2	Y160M-2
功率Power(kW)	1.5	3	4	5.5	7.5	11	18.5

型号 Type	油嘴个数 No. of Nozzle	耗油量Fuel Oil Consumption (kg/h)	功率范围 Output Power Range (kW)	油泵电机功率 Motor Power of Oil Pump(kW)	电加热器功率 Heater Power (kW)	油泵额定转速 Rated Speed of Oil Pump(r/min)
ZC5Z	1	40~120	465~1400	1.1	4	1450
ZC7Z	1	50~160	582~1861	1.1	6	
ZC8Z	2	70~240	814~2800	1.1	8	
ZC8Z/2	2	75~280	873~3256	1.1	8	
ZC10Z	3	100~380	1163~4420	1.1	10	
ZC11T	3	170~490	1980~5699	1.1	13	
ZC11T/2	3	220~730	2558~8490	2.2	18	



Code: 159061

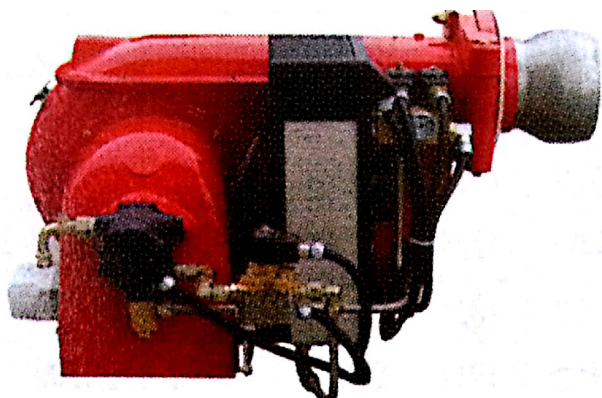
☼ 供应商: 3295

☼ Supplier: 3295

SDR回转杯式燃烧器 Rotary Cup Burner

型号Type	SDR-1	SDR-1.5	SDR-2	SDR-2.5
燃烧量Capacity(kg/h)	45~100	50~150	50~200	50~250
燃料Fuel Oil	Heavy oil viscosity RW#1~8000 second at 38°C (Waste oil combustion can also be carried out) Fuel oil viscosity RW#1~250 second			
燃料油压力Fuel Oil Pressure(kg/cm ²)	Max 1.5	Max 3.0		
转速Speed(r/min)	6000			
通风方式Combustion System	Forced drafter fan system			
全自动制方式Automatic Control System	ON-OFF control		ON-OFF & high-low control	
点火方式Ignition System	Diesel oil(gas) pilot burner			
燃烧马达Motor of Burner	120~250W DC24V			
主要附属品 Main Accessories	Wind box(secondary air damper, secondary air vane, burner tile, primary air duct, peep hole), air pressure switch, flame eye, pilot burner for ignition, oil control valve, control motor, oil pressure meter, connection box, control panel, standard spare parts.			

↓ Notes: Certificate CE, NK.



Code: I59062

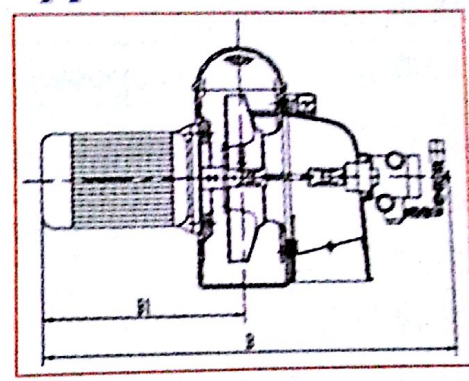
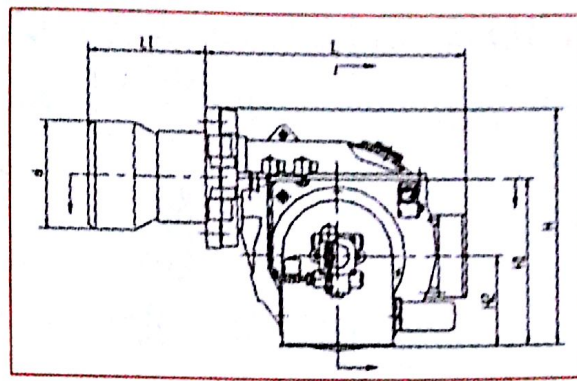
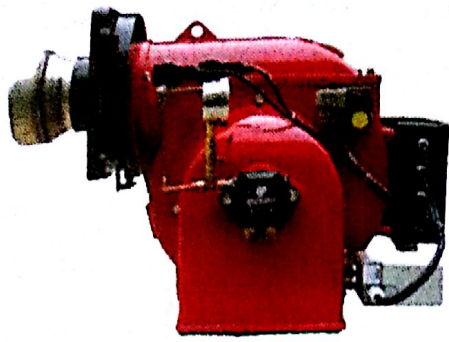
☼ 供应商: 2211

☼ Supplier: 2211

HY、HZY系列燃油燃烧器 Burner

型号 Type	功率范围 Output Power Range(kW)	耗油量 Fuel Oil Consumption(kg/h)	功率 Power(kW)	最大运行电流 Max. Operating Current A	适用燃料 Fuel
HY03 a(c)	190 ~ 771	16 ~ 65	1.1	2.4	Light Oil
HY05b(c, e)	310 ~ 1190	26 ~ 100	1.5	3.4	
HY07b(c, e)	595 ~ 1905	50 ~ 160	3	6.4	
HY08b(c, d, e)	835 ~ 2740	70 ~ 230	4	8.7	
HY09b(c, d, e)	750 ~ 2980	63 ~ 250	7.5	15	
HY10b(d, e)	1130 ~ 4525	95 ~ 380	10	21	
HZY05c	310 ~ 1190	28 ~ 106	1.5	3.4	Heavy Oil
HZY07b(c, e)	675 ~ 1905	60 ~ 170	3	6.4	
HZY08b(c, e)	845 ~ 2740	75 ~ 244	4	8.7	
HZY09b(c, e)	900 ~ 2980	80 ~ 265	7.5	15	
HZY10b(e)	1125 ~ 4525	100 ~ 403	10	21	
HZY11 b(e)	1575 ~ 5240	140 ~ 466	12	23.8	

↓ Notes: 1. Control Mode: a, Single Stage; c, Two Stage; d, Three Stage; b, Sliding Two Stage, e, Proportional Mode. 2. Light Oil: 0# Diesel Oil; Heavy Oil; 450 cst Fuel

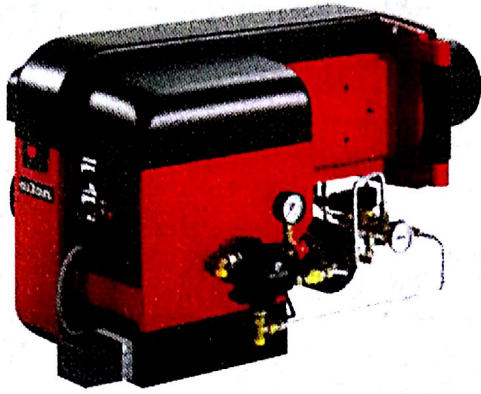


DCL系列船用总装式燃油燃烧器 General Assembly Fuel Burner

型号 Type	喷油量 Fuel-injection Capacity(kg/h)	燃烧器功率 Burner Power (kW)	电源 Power Supply	额定喷油压力 Rated Pressure of Fuel-injection(MPa)	控制方式 Control Mode	净重 Weight (kg)
1	7.5~25	89~296	380V 50Hz	1.0	一段火/Double Nozzle	30
3	20~40	237~473		1.0	一段火/Double Nozzle	51
5	28~55	331~651		1.0	一段火/Double Nozzle	65
7	45~100	534~1186		1.0	二段火/Double Nozzle	70
5W	15~70	178~830		1.1	二段火/Double Nozzle	53
7W	43~155	510~1838		1.1	二段火/Double Nozzle	73
8W	55~180	652~2153		1.1	二段火/Double Nozzle	81
9W	50~260	593~308		1.1	二段火/Double Nozzle	125
10W	70~300	830~3558		1.1	二段火/Double Nozzle	137
11W	105~400	1245~4744		1.1	二段火/Double Nozzle	195

型号Type	d (mm)	L (mm)	L1 (mm)	H (mm)	B (mm)	Bl (mm)
1	139	450	105	342	450	230
3	170	610	153	515	630	310
5	180	610	160	515	630	310
7	230	610	245	515	740	362
5W	180/160	686	144/132	495	740	342
7W	220/200	764	225/215	556	820	370
8W	240/220	764	230/220	556	820	390
9W	240/220	945	220	672	920	500
10W	265	945	270	672	920	450
11W	325	950	370	710	960	480

↓ Notes: 1. According to CB/T3752-1995; 2. Power Source 380V/50Hz; 3. Certificate CCS.



Code:159069

☼ 供应商: 3151

☼ Supplier: 3151

重油燃烧器 Heavy-oil Burner

燃烧器型号 Type	RP-90H	RP-140H	RP-150H	RP-150T	RP-140M	RP-150M
耗油量 Fuel Oil Consumption(kg/h)	30-90	60-180	86-210	60-240	50-180	60-240
功率 Power(kW)	340-1000	680-2040	975-2400	680-2700	560-2040	680-2700

燃烧器马达 Motor of Burner 3-400V 50Hz

输出功率 Output Power(kW)	2.2	4.0	5.5	5.5	4.0	5.5
电流 Current (A)	4.7	8.1/7.7	11.1	11.1	8.7	11.1
转速 Speed(r/min)	2870	2880	2910	2910	2900	2910
程序控制器 Process Controller	LALI.25	LALI.25	LALI.25	LALI.25	LALI.25	LALI.25

油管连接 Oil Pipe Coupling

进油 Oil Inlet	RI/2"	RI/2"	RI/2"	RI/2"	RI/2"	RI/2"
回油 Oil Return Pipe	RI/2"	RI/2"	RI/2"	RI/2"	RI/2"	RI/2"
油泵 Oil Pump	E6	E7	TA2	TA2	TA2	TA2

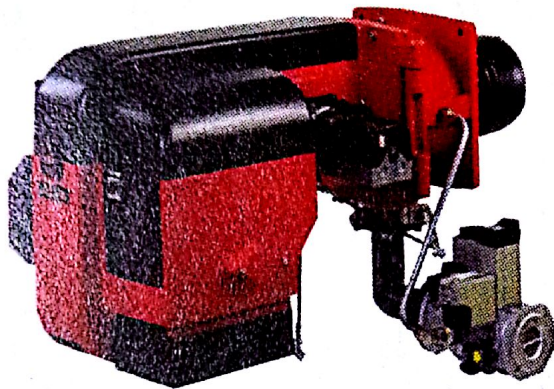
加热器 Heater 3~400V 50Hz

功率 Power(kW)	3	6	12	12	6	12
总重量 Weight(kg)	69	121	150	152	139	167

燃烧器型号 Type	RP-500M	RP-600M	RP-700M	RP-700M- I	RP-700M- II
耗油量 Fuel Oil Consumption(kg/h)	140-535	125-600	170-710	170-800	170-850
功率 Power(kW)	1585-6060	1400-6750	1900-7900	1900-9000	1900-9500

燃烧器马达 Motor of Burner 3-400V 50Hz

输出功率 Output Power(kW)	11.0	15.0	18.5	22.0	22.0
电流 Current (A)	21.0	28.0	34.0	41.0	41.0
转速 Speed(r/min)	2925	2925	2930	2940	2940



Code: 159070

☼ 供应商: 3151

☼ Supplier: 3151

燃气燃烧器 Fuel Gas Burner

燃烧器型号 Type	GP-50H	GP-80H	GP-90H	GP-140H	GP-150H
功率 Power(kW)	200-800	350-1000	350-1500	410-2350	950-2700

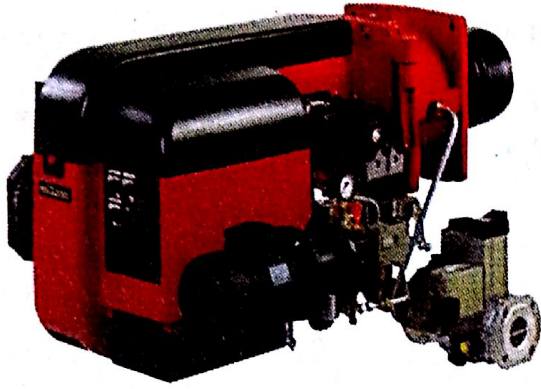
燃烧器马达 Motor of Burner 3-400V 50Hz

输出功率 Output Power(kW)	1.1	1.5	2.2	4.0	5.5
电流 Current (A)	2.85/2.45	3.2	4.8	8.1/7.7	11.1
转速 Speed(r/min)	2840	2840	2840	2880	2910
程序控制器 Process Controller	LFLI.322	LFLI.322	LFLI.322	LFLI.322	LFLI.322
总重量 Weight(kg)	41	63	63	110	125

燃烧器型号 Type	GP-140T	GP-150T	GP-140M	GP-150M
功率 Power(kW)	410-2350	450-2700	410-2350	450-2700

燃烧器马达 Motor of Burner 3-400V 50Hz

输出功率 Output Power(kW)	4.0	5.5	4.0	5.5
电流 Current (A)	8.7	11.1	8.7	11.1
转速 Speed(r/min)	2900	2910	2900	2910
程序控制器 Process Controller	LFLI.322	LFLI.322	LFLI.322	LFLI.322
总重量 Weight(kg)	121	130	121	130



Code: 159072

☼ 供应商: 3151

☼ Supplier: 3151

燃油/燃气双燃料燃烧器 Fuel Oil/Fuel Gas Burner

燃烧器型号 Type		GRP-140M	GRP-150M
燃油消耗 Fuel Oil Consumption (kg/h)		50-180	60-240
功率 Power (kW)	燃油 Fuel Oil	560-2040	680-2700
	燃气 Fuel Gas	410-2040	450-2700
燃烧器马达 Motor of Burner 3-400V 50Hz			
输出功率 Output Power (kW)		4.0	5.5
电流 Current (A)		8.7	11.1
转速 Speed (r/min)		2900	2910
程序控制器 Process Controller		LFLI.322	LFLI.322
油管连接 Oil Pipe Coupling			
进油 Oil Inlet		R1/2"	R1/2"
回油 Oil Return Pipe		R1/2"	R1/2"
油泵 Oil Pump		TA2	TA2
油泵马达 Motor of Oil Pump 3~400V 50Hz			
输出功率 Output Power (kW)		1.5	1.5
电流 Current (A)		3.3	3.3
转速 Speed (r/min)		2870	2870
加热器 Heater 3~400V 50Hz			
功率 Power (kW)		6	12
总重量 Weight (kg)		174	198