

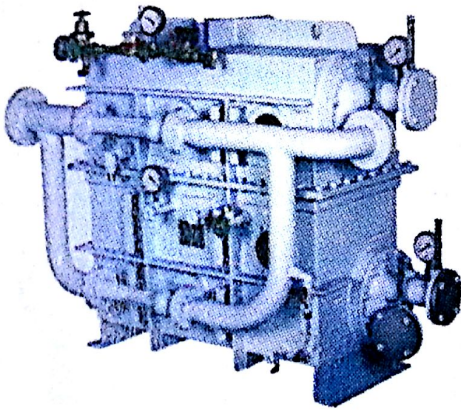
Code:195007

☼ 供应商: 3443

☼ Supplier: 3443

海水淡化装置 Fresh Water Generator

型号Type	ISF-10P	ISF-20P	ISF-40P	ISF-50P	ISF-60P
处理能力Capacity (m ³ /day)	10	20	40	50	60
蒸汽管冷却水 Jacket Water	处理能力Capacity (m ³ /hr)	24	44	86	112
	进口温度Inlet Temperature (°C)	80 Over			
喷射泵 Ejector Pump	处理能力Capacity (m ³ /hr)	35	60	100	140
	扬程Total Head (m)	48			
蒸馏泵 Distillate Pump	处理能力Capacity (m ³ /hr)	1.5		3.0	
	扬程Total Head (m)	30			
最大含盐量Max. Salinity (ppm)	10				
海水温度Sea Water Temperature (°C)	32 Below				
电源 Power Supply	AC220/380/415/440V,50/60Hz,3				
长度L (mm)	1370	1370	2425	2425	2425
宽度W (mm)	1180	1315	1315	1380	1460
高度H (mm)	1535	1535	2180	2180	2180
重量Weight (kg)	1000	1100	1250	1380	1500



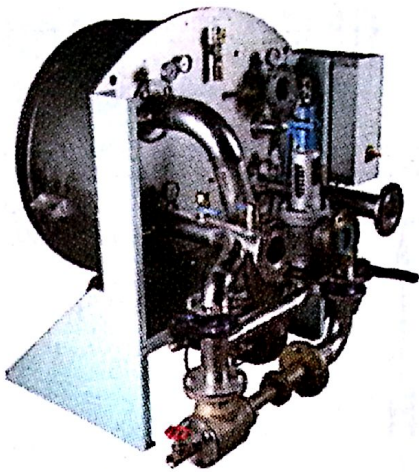
Code: 195000

☼ 供应商: 3443

☼ Supplier: 3443

海水淡化装置 Fresh Water Generator (Tubular Type)

型号 Type	ISF-10	ISF-50	ISF-70	ISF-90	ISF-110	ISF-120	
处理能力 Capacity (m ³ /day)	1	10	15	25	35	40	
蒸汽管冷却水 Jacket Water	处理能力 Capacity (m ³ /hr)	6	35	40	60	85	95
	入口温度 Inlet Temperature (°C)	80 Over					
喷射泵 Ejector Pump	处理能力 Capacity (m ³ /hr)	12	35	40	50	85	95
	扬程 Total Head (m)	38	45	48	48	48	48
蒸馏泵 Distillate Pump	处理能力 Capacity (m ³ /hr)	0.3	1.5	1.5	1.5	3	3
	扬程 Total Head (m)	20	30	30	30	30	30
最大含盐量 Max. Salinity (ppm)	10						
海水温度 Sea Water Temperature (°C)	32°C Below						
电源 Power Supply	AC220/380/415/440V, 50/60Hz, 3 φ						
长度 L (mm)	783	1293	1,363	2022	2052	2,252	
宽度 W (mm)	360	700	758	940	1200	1,300	
高度 H (mm)	800	1,080	1,210	1580	1880	2,080	
重量 Weight (kg)	80	365	420	1200	1420	1,580	



Code: 195023

☼ 供应商: 2204

☼ Supplier: 2204

造水机 Fresh water generator

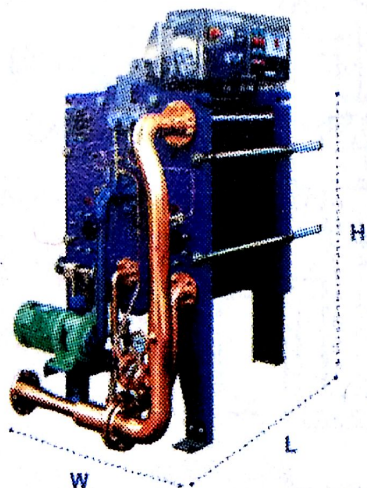
可配制蒸汽喷射泵型式或蒸汽加热模块型式。

Steam jet pump Type or steam heating Module Type

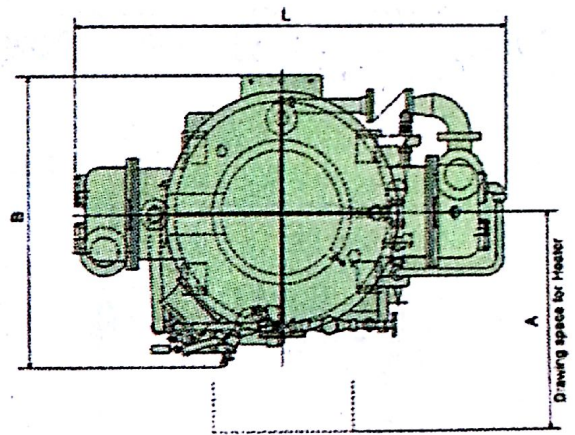
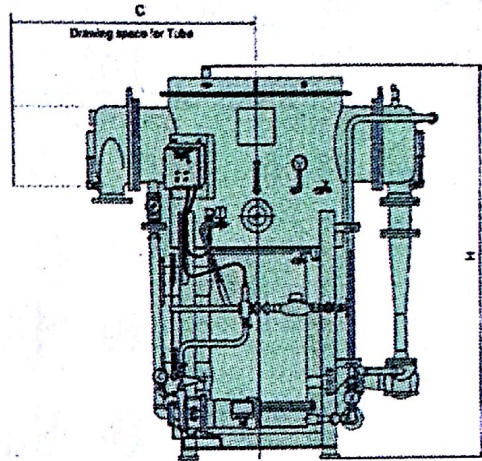
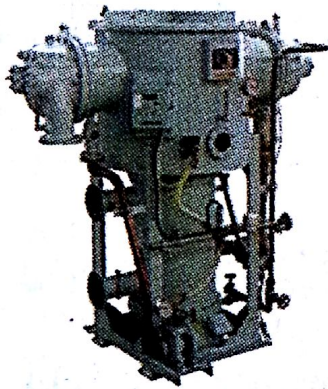
型号 Type	造水量 Capacity (t/day)	外形尺寸 Dimension(mm)	净重 Net weight(kg)	工作重 Operation weight(kg)
FWG-03	3	770 × 950 × 950	275	325
FWG-05	5	770 × 950 × 950	300	350
FWG-7	7	770 × 1000 × 950	325	375
FWG-10	10	970 × 1025 × 1200	850	900
FWG-12	12	970 × 1055 × 1200	900	950
FWG-15	15	970 × 1150 × 1200	950	1000
FWG-18	18	1160 × 1100 × 1415	1000	1050
FWG-20	20	1160 × 1150 × 1415	1050	1200
FWG-25	25	1160 × 1280 × 1415	1200	1250
FWG-30	30	1200 × 1250 × 1600	1800	1900
FWG-35	35	1200 × 1300 × 1600	1850	1950
FWG-40	40	1200 × 1350 × 1600	1900	1950
FWG-45	45	1200 × 1400 × 1600	1950	2000
FWG-50	50	1200 × 1450 × 1600	2000	2050

↓ Notes: Certificate CCS

造水机 Fresh Water Generator



型号 Type	处理能力 Capacity (ton/day)	外形尺寸Dimensions L × W × H (mm)	重量 Weight (kg)
WOORISOO-65	10	750 × 850 × 1500	950
	15	850 × 850 × 1500	980
	20	950 × 850 × 1500	1020
WOORISOO-80	25	1150 × 850 × 1500	1070
	30	1250 × 850 × 1500	1100
	35	1450 × 850 × 1500	1140
WOORISOO-100	40	1650 × 850 × 1500	1180
	50	1750 × 850 × 1500	1210
	60	1850 × 850 × 1500	1240



板式造水机 Plate Type Fresh Water Generator

型号 Type EX		05RE	35RE	40RE	45RE
造水量 Capacity (t/d)		5	35	40	45
盐分浓度 Salinity of Distillate (ppm)		below 10			
耗热量 Heat Consumption (kW)		157	1103	1264	1434
冷却海水 Cooling Seawater Temperature (°C)		32			
加热水 Hot water	Q(m ³ /h)	13	94	105	126
	T(°C)	80			
蒸馏水泵 Distillate Pump	Q(m ³ /h)	0.3	2.5		
	Power(kW)	0.4	1.5		
喷射式水泵 Ejector Pump	Q(m ³ /h)	12	88	103	105
	H(m)	48			
	Power(kW)	5.5	18.5	30.0	
电源 Power Supply		Motor: AC440V 60Hz 3phase/Salinity Indicator: AC100-200V 60Hz 1phase			
外形尺寸 (W × L × H) (mm)		1330 × 1210 × 1650	1820 × 1600 × 2000	2040 × 1600 × 2000	2080 × 1620 × 2000
自重 Empty (kg)		900	1750	1850	1900