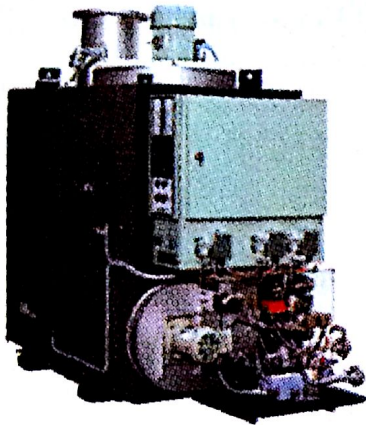


焚烧炉 Incinerator

焚烧炉型号 Incinerators	ATLAS 600 SL WSP	ATLAS 800 SL WSP	ATLAS 1200 SL WSP	ATLAS 1500 SL B W S P	ATLAS 2400LP	
燃烧能力 Combustion Capacity (kW)	581	814	1163	1500	2400	
燃烧能力 Combustion Capacity (kcal/h)	500000	700000	1000000	1290000	2000000	
燃烧固体物质能力 Combustion Capacity Solid Waste	100 kg/h max. 400 kg/24 hours	100 kg/h max. 400 kg/24 hours	230 kg/h max. 920 kg/24 hours	230 kg/h max. 920 kg/24 hours	230 kg/h max. 920 kg/24 hours	
燃烧流体物质能力 Combustion Capacity Liquid Waste (App.) (IMO standard is 20% water content)	50 L/H at 0% water content 66 L/H at 20% water content 100 L/H at 50% water content	70 L/H at 0% water content 95 L/H at 20% water content 140 L/H at 50% water content	100 L/H at 0% water content 135 L/H at 20% water content 200 L/H at 50% water content	129 L/H at 0% water content 170 L/H at 20% water content 258 L/H at 50% water content	200 L/H at 0% water content 270 L/H at 20% water content 400 L/H at 50% water content	
外形尺寸 Dimensions L × W × H (mm)	Standard waste sluice (for 30/bag)	2481 × 1806 × 2457	2898 × 1990 × 2842	3358 × 2138 × 2872	-	-
	Big waste sluice (for 70 /bag)	2716 × 1806 × 2457	3106 × 1990 × 2842	3544 × 2138 × 2872	4045 × 2803 × 3000	5300 × 2803 × 3200
	XL waste sluice (for 120 / bag)	-	-	2997 × 2686 × 2872	4045 × 2833 × 3000	5300 × 2833 × 3200
重量 Weight Approx (kg) with standard waste sluice	4900	6100	6800	8500	11000	



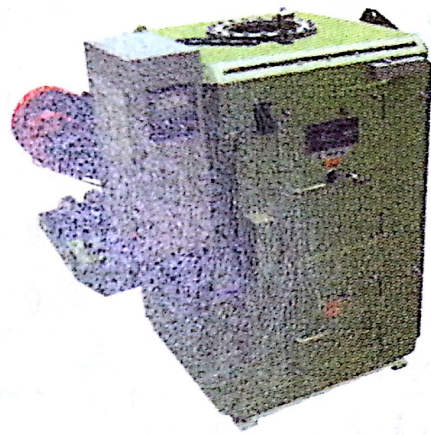
Code:273002

☼ 供应商: 3571

☼ Supplier: 3571

船用焚烧炉 Marine Incinerator

型号 Type	BGW-20N	BGW-30N	BGW-50N	BGW-80N	BGW-100N	
最大处理能力 Max. Capacity(kW)	301	417	650	1067	1299	
废油处理 waste Oil	热量 Amount of Heat(kW)	233	349	582	930	1163
	最大处理能力 Max. Capacity(kg/h)	24.3	36.4	60.7	97.1	121.4
固形物处理 Solid Waste	热量 Amount of Heat(kW)	68.0		136.0		
	最大处理能力 Max. Capacity(kg/h)	20.0		40.0		
	投入量 Max. Capacity(kg/once)	20.0		40.0		
控制方式 Control System	Automatic Combustion Controller					
废油燃烧器形式 Waste Oil Burner	Air Atomizing Burner					
燃烧器燃料消耗量 Fuel Consumption of Aux. Burner(kg/h)	4.3 (A Diesel Oil)			5.5 (A Diesel Oil)		
电源 Power	ø3 440V, 60Hz					
设备功率 Installed Electric Capacity(kW)	7.0	9.7	17.9	34.4	43.2	
外形尺寸 Dimensions(mm)	宽 Width	2200		2355	3155	
	深 Depth	7210			1540	
	高 Height	2765		2425	2710	(2710)
重量 Weight(kg)	3200		340	6750		



Code:273006

☼ 供应商: 2150

☼ Supplier: 2150

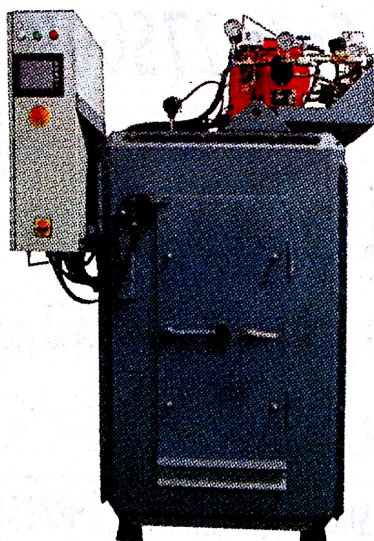
OG400C 船用焚烧炉 Marine Incinerator

热容量Heat Capacity	500,000 _{kcal} /h(580kw)	
固体废物Solid Waste	500,000kcal/h	
固体废物每次填料Solid Waste Feeding(L/charge)	400	
废油 Waste Oil	65L(63.5kg)/h	
液体废物最大含水率Liquid Waste Containing Max. Water	<50%	
柴油耗量Diesel Consumption (L/h)	28	
总功率消耗Power Consumption (kW)	11-15	
外形尺寸Dimension (mm)	OG400C/ OG400C SW	1350 × 1890 × 1960
	OGS400C/OGS400CSW	1697 × 1890 × 1960
重量Weight (kg)	OG400C/ OG400C SW	3020/2970
	OGS400C/OGS400CSW	3210/3085
配套风机和重量Flue Gas Fan	DN350 & 330KG	

↓ Notes: Certificate ABS, CCS, DNV, GL, LR

该设备操作简便，人机界面友好，全自动操作控制。整个烧烧过程中，炉温、烟温和炉膛负压由 PLC +HMI进行全过程自动监控调节。该焚烧炉的设计符合MARPOL73/78 公约附则 V 和 VI 及 IMO MEPC76(40) 决议。

This incinerator operate easily, fully automatic. The temperature of combustion and flue gas and pressure of combustion negative are monitoring and controlled by PLC and HMI(Human Machine Interface).This incinerator designs according to MARPOL73/78 Annex VI and RESOLUTION MEPC.76(40) adopted on 25 September 1997.



型号 Type	热容量 Capacity kcal/h	动力消耗 Power Consumption kW	焚烧炉尺寸 Dimension L × W × H mm	重量 Weight kg
CYF-18	180,000	7	1345 × 986 × 1912	1450
CYF-40	400,000	15	1800 × 1330 × 1910	2650
CYF-50	500,000	15	1800 × 1330 × 1910	2650
CYF-70	700,000	18	1830 × 2350 × 2200	5000